

PYP NEWSLETTER

Second Grade Unit I



Who We Are

Central Idea: Societies are influenced by their natural environment.

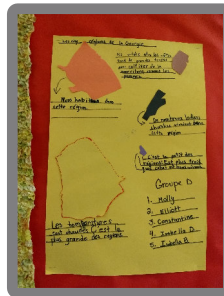
In this unit, students studied the geography of Georgia by looking at some of its rivers and regions. They then made connections with how the Native Americans lived in those regions through research and reading comprehension. The students presented their newly acquired knowledge by making a diorama to illustrate the houses, and the way of life of the Creeks and Cherokees.

Lines of Inquiry

What are the topographical features that define our region?

How are the lives of the native people affected by their surroundings?

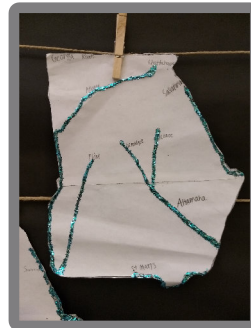
How does the environment influence the cultures and traditions of the native people of the region?



The French track's group project on the five regions of Georgia



The Spanish track's group dioramas on Native American territories.



The Spanish track's beautiful and creative project on defining where Georgia's rivers are located!

Upcoming Unit

Our next unit will be about systems and the students will study "How We Organize Ourselves." In L1 they will go into depth by inquiring about the Executive branch while in L2 they will work on the solar system. In math, they will study two other systems: time and money!